

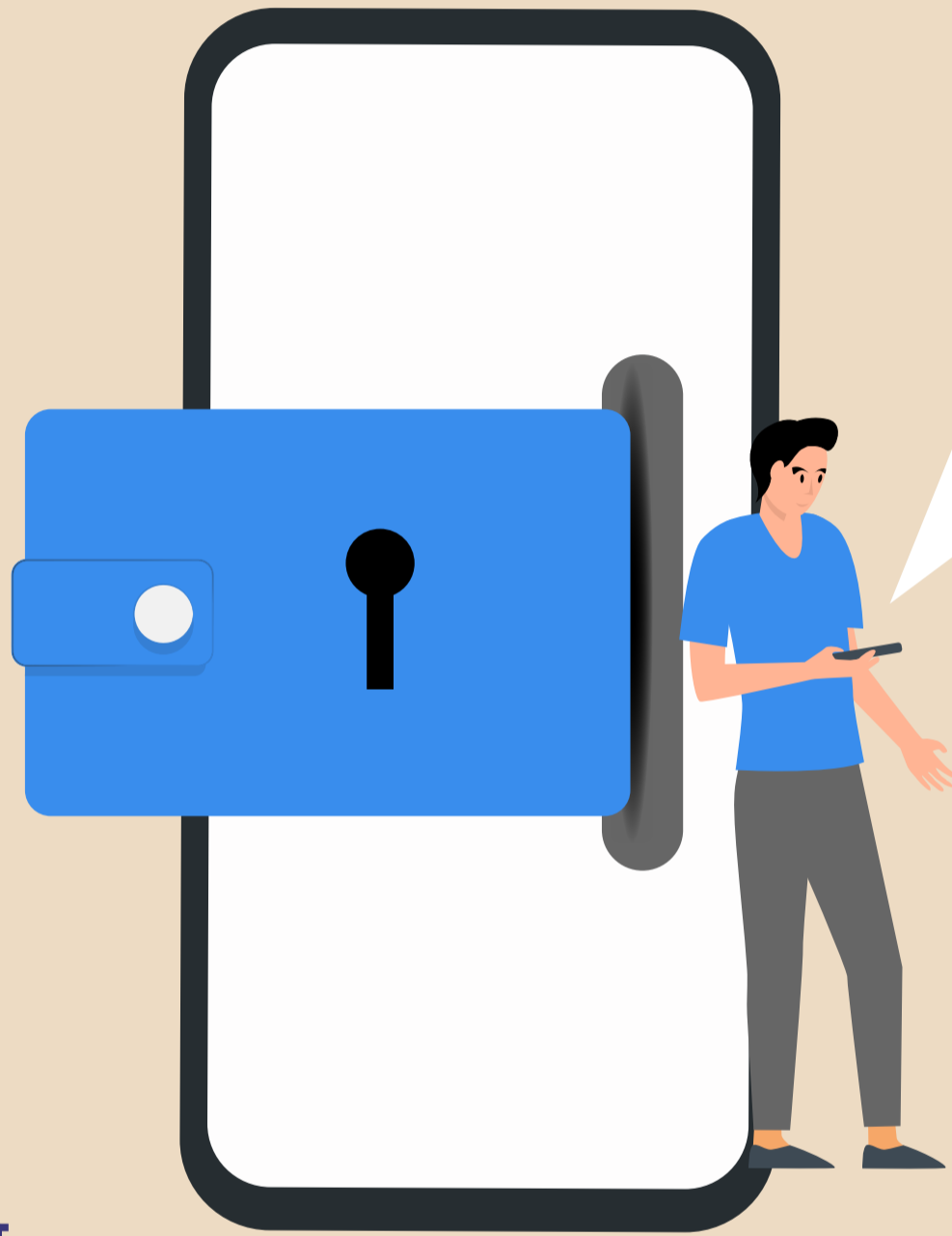


www.isea.gov.in



# Use a PIN or Biometric lock keep your e-wallet safe from any shock

पिन या बायोमेट्रिक लॉक का उपयोग करें  
अपने ई-वॉलेट को किसी भी विपदा से सुरक्षित रखें ।



**#Be Safe**  
**#Stay Safe**  
[www.staysafeonline.in](http://www.staysafeonline.in)

Programme by : Ministry of Electronics & Information Technology(MeitY), Govt. of India

Supported by : Ministry of Home Affairs (MHA), Govt. of India

In association with



साइबर स्वच्छता केन्द्र  
CYBER SWACHHTA KENDRA  
Botnet Cleaning and Malware Analysis Centre

www.  
**InfoSec**  
awareness.in

National Cyber Crime  
Helpline Number  
**1930**

Implemented by

